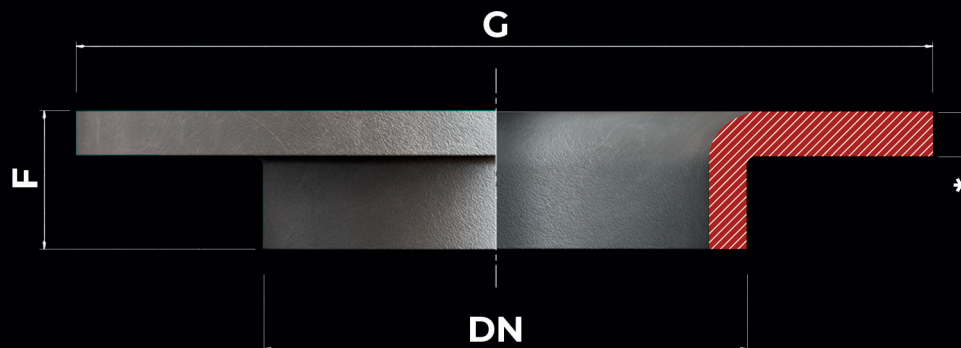
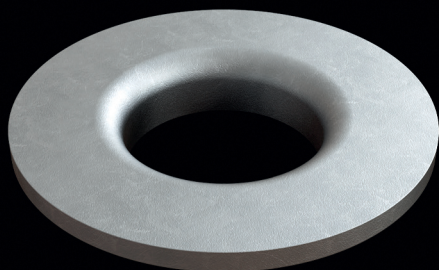


Pestana Curta



OD	DN			F			G		
	Min.	Nom.	Max.	Min.	Nom.	Max.	Min.	Nom.	Max.
1/2"	20,5	21,3	22,1	6,0	7,0	8,0	43,0	45,0	47,0
3/4"	25,9	26,7	27,5	7,0	8,0	9,0	53,0	55,0	57,0
1"	32,7	33,5	34,3	8,0	9,0	10,0	60,0	62,0	64,0
1.1/4"	41,4	42,2	43,0	9,0	10,0	11,0	70,0	72,0	74,0
1.1/2"	47,5	48,3	49,1	11,0	12,0	13,0	78,0	80,0	82,0
2"	59,7	60,5	61,3	12,0	13,0	14,0	98,0	100,0	102,0
2.1/2"	72,4	73,2	74,0	13,0	14,0	15,0	116,0	118,0	120,0
3"	88,1	88,9	89,7	14,0	15,0	16,0	128,0	130,0	132,0
3.1/2"	100,8	101,6	102,4	15,0	16,0	17,0	148,0	150,0	152,0
4"	113,5	114,3	115,1	17,0	18,0	19,0	160,0	162,0	164,0
5"	140,4	141,2	142,8	18,0	20,0	22,0	187,0	190,0	193,0
6"	167,4	168,2	169,8	22,0	24,0	26,0	213,0	216,0	219,0
8"	218,2	219,0	220,6	24,0	26,0	28,0	271,0	274,0	277,0
10"	272,3	273,1	275,5	24,0	26,0	28,0	330,0	333,0	336,0
12"	323,1	323,9	326,3	26,0	28,0	30,0	386,0	389,0	392,0

Matéria Prima

Aço Inoxidável ASTM A403
WPS / WPW 304/L e 316/L

Normas

SCH 5 SCH 40 SCH 160
SCH 10 SCH 80

Todas as medidas poderão sofrer alterações sem aviso prévio

* Esta dimensão não pode ser menor do que a espessura da parede da dimensão DN