

# União RJT

## Matéria Prima

ASTM A182 TP 304 e  
TP 316/L

## Acabamento de Superfície

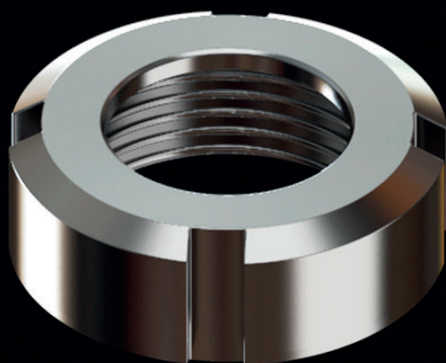
PI/PE: Ra < 0,80 µm (32 µin)  
Polimento Mecânico

## Vedações

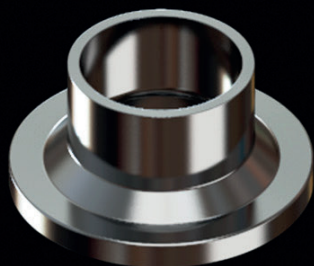
EPDM  
Silicone  
Viton

## Normas e Bitolas

Dimensões conforme norma  
BS 1864



Porca



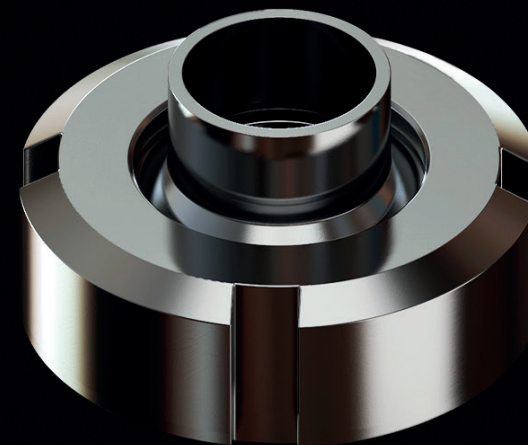
Niple



Vedação



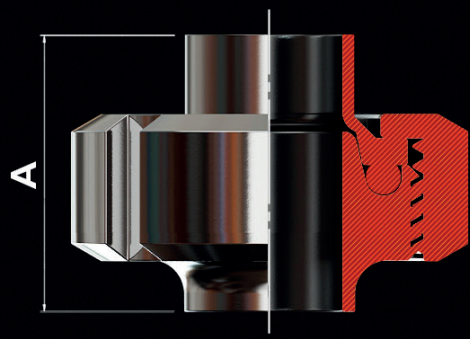
Macho



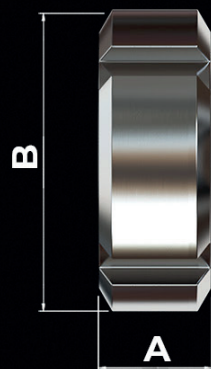


# União RJT

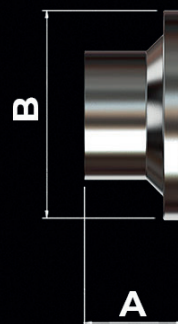
União



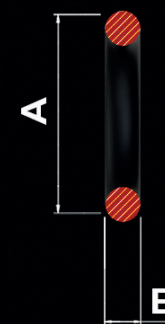
Porca



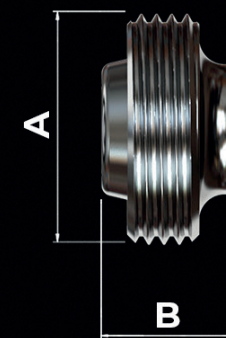
Niple



Vedação



Macho



| Ø      | A    |
|--------|------|
| 1"     | 41,7 |
| 1.1/2" | 41,7 |
| 2"     | 41,7 |
| 2.1/2" | 41,7 |
| 3"     | 41,7 |
| 4"     | 41,7 |

| A    | B     |
|------|-------|
| 22,2 | 58,5  |
| 22,2 | 74,0  |
| 22,2 | 85,5  |
| 22,2 | 98,5  |
| 22,2 | 111,6 |
| 22,2 | 138,0 |

| A    | B     |
|------|-------|
| 19,5 | 41,3  |
| 19,5 | 54,0  |
| 19,5 | 66,7  |
| 19,5 | 79,4  |
| 19,5 | 92,1  |
| 19,5 | 117,5 |

| A     | B   |
|-------|-----|
| 39,0  | 6,5 |
| 52,0  | 6,5 |
| 65,0  | 6,5 |
| 78,0  | 6,5 |
| 90,0  | 6,5 |
| 116,0 | 6,5 |

| A     | B    |
|-------|------|
| 45,7  | 22,2 |
| 58,4  | 22,2 |
| 72,7  | 22,2 |
| 85,4  | 22,2 |
| 98,1  | 22,2 |
| 123,5 | 22,2 |